

#300, PARK PLACE
4825, 47 STREET
RED DEER, ALBERTA
T4N 1R3

Haven

Haven provides specialized care for youth who are gender diverse (i.e. trans, non-binary, gender creative) and cisgender youth who are sexually diverse (i.e. gay, lesbian, bisexual, pansexual) from across Alberta.

We recognize that attachment, community and cultural connection is key. Haven provides a wrap-around service delivery model to develop individualized programming based on addressing the client's unique needs. These needs may include multiple impairments, complex mental health issues, and/or behavioural needs. (Adapted from the Government of Alberta definition of Complex Needs, 2010)

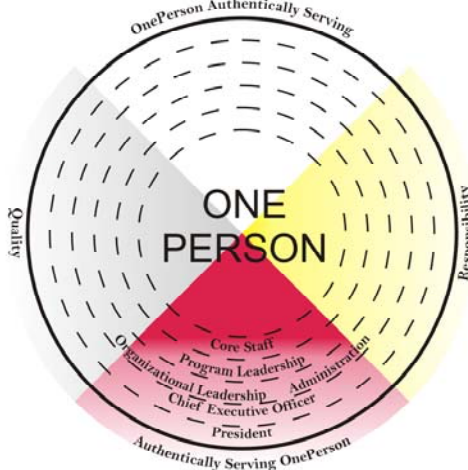
Our professional team members are positive role models and advocates who are nurturing and respectful of youth, their families and their cultures. Haven is a structured and therapeutic environment providing care for children aged 12 up to their 18th birthday. The length of stay is dependant on the needs of the individual.

Working within an Indigenous and LGBTQ+ cultural framework Haven is a 3-bed 24 hour staffed home.

Heritage Family Services' practice model emphasizes relationships, attachment, positive psychology, appreciative inquiry, collaborative problem-solving, signs of safety, trauma informed practice and Wahkohtowin.

We strive to assist development while building greater awareness of physical, mental, emotional and spiritual needs. We support youth through grief and loss, trauma informed practice, and neurological development.

Heritage Family Services
Organizational Diagram



Schooling – Public School with an Education Program tailored to suit the youth's needs.

Community Links - Red Deer Native Friendship Society, Urban Aboriginal Voices, Youth HQ, Central Alberta Pride, Trans and Non-Binary Aid Society, Red Deer Public School District Sexual Orientation and Gender Identity Committee, Alberta Health Services, Red Feather Women.

Cultural Programming - Aboriginal Awareness Training for staff to assist them in supporting children to maintain a connection with their cultural roots. Access to community elders to help youth learn cultural teachings including: the Medicine Wheel, the Seven Sacred Teachings, smudging, Sweat Lodge Ceremonies, etc.

Recreation – Community recreational outings, cultural outings.

On-call Support – 24 hour on-call support.

Efforts to Outcomes (E.T.O.) – Outcome monitoring, case planning, goal creation and attainment scaling.

Staff Training – Therapeutic Crisis Intervention, ASIST (Suicide Intervention), Aboriginal Awareness, First Aid, LGBTQ+ Cultural Competency.

Therapy – Individual, family, group therapy, and suicide risk assessments.

Reporting – Critical Incidents within 24 hours, monthly Progress Reports, Care Plans updated quarterly.

Admission Requirement – Delegation of powers, signed consent form, information consolidation, reason for referral, client demographics, service plan, highlighted client special needs.

**For more information including the
Schedule A, please contact:**

Shay (Jennifer) Vanderschaege
Haven Program Coordinator
j.shay@heritagefamilyservices.com
403-340-9701(c)

